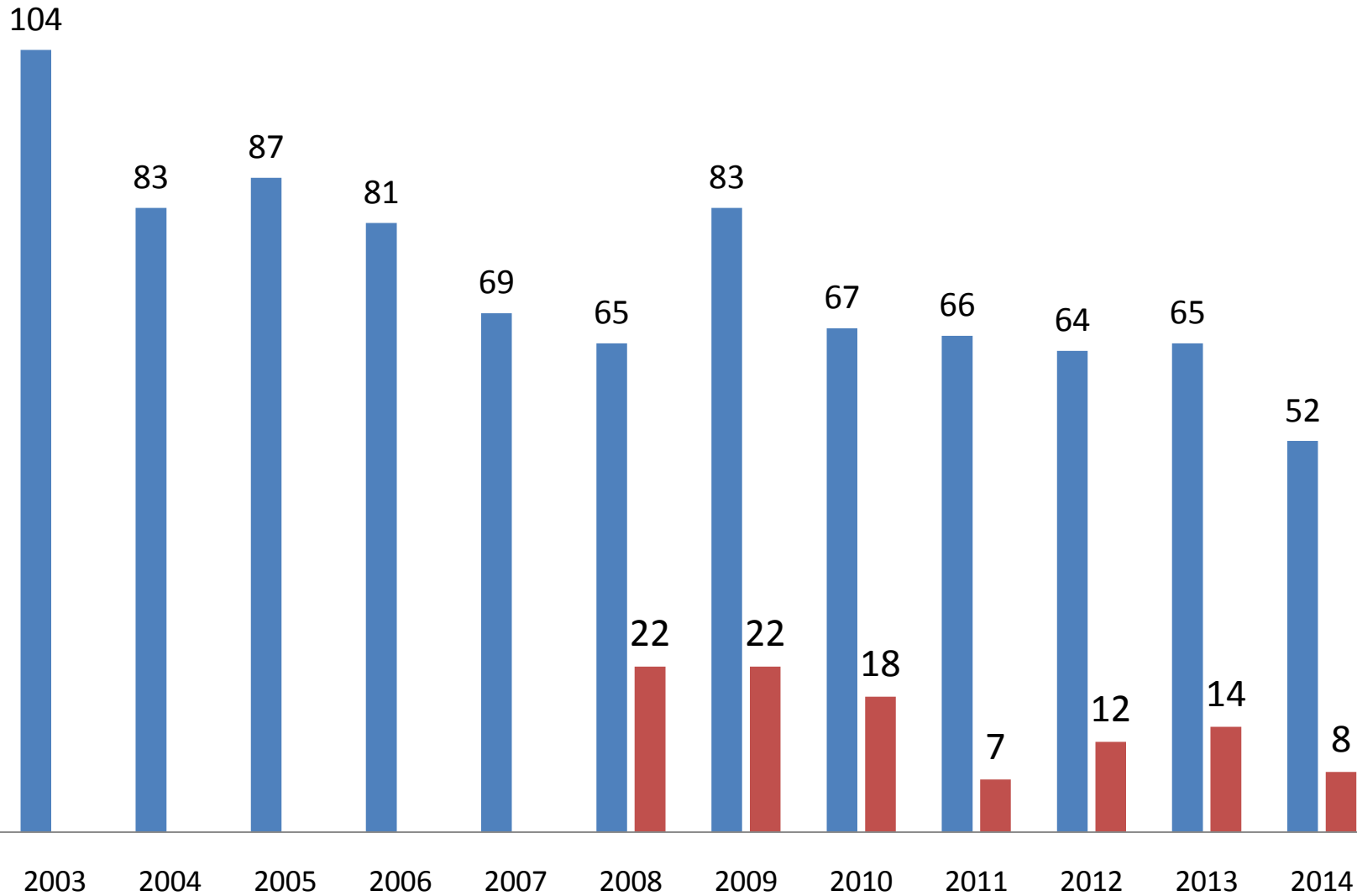


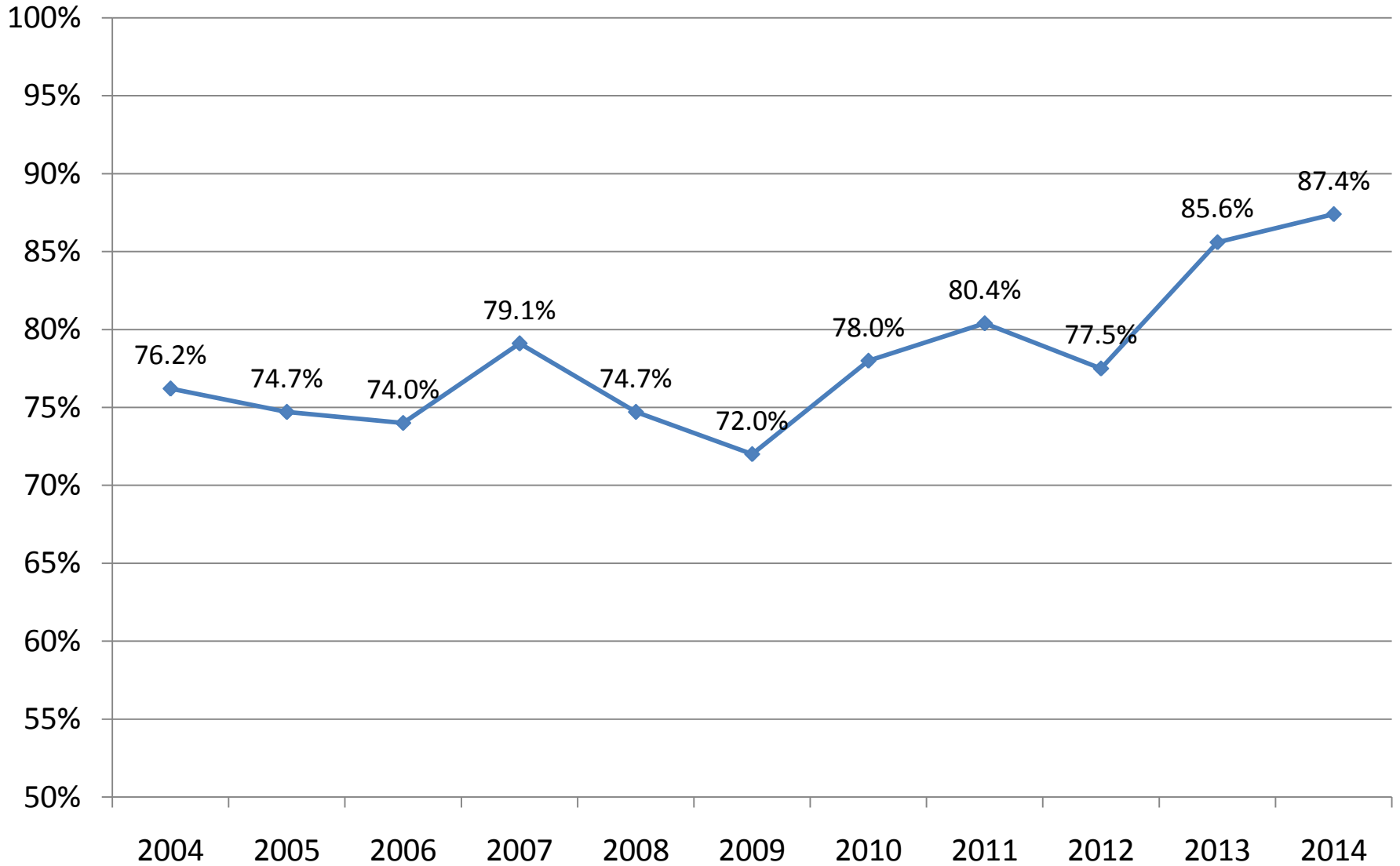
Rhode Island Driving Fatalities

■ Total Fatalities ■ Young Driver Fatalities



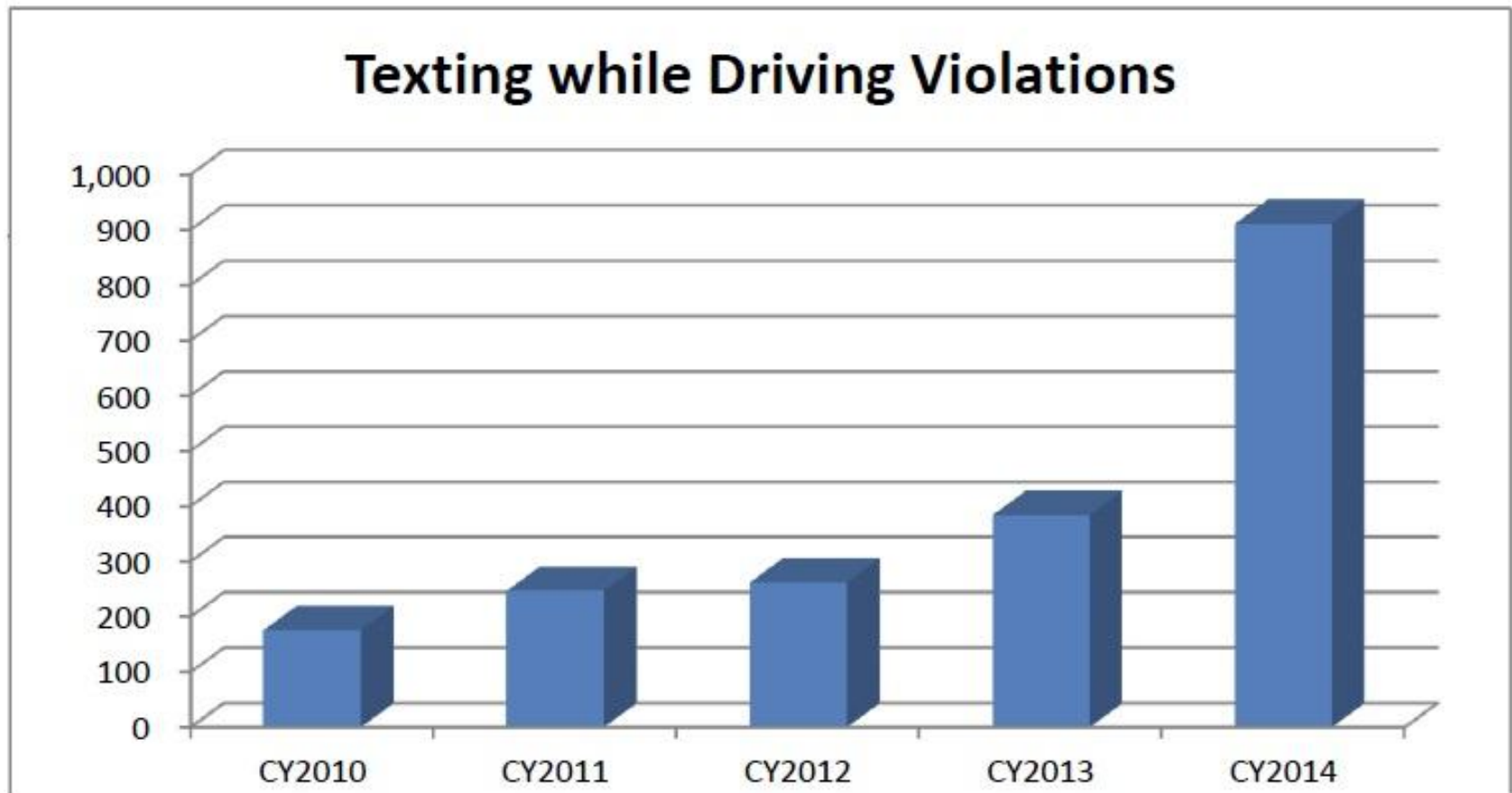
* Source: Office of the Attorney General Traffic Safety Resource Prosecutor

Seat Belt Use in Rhode Island



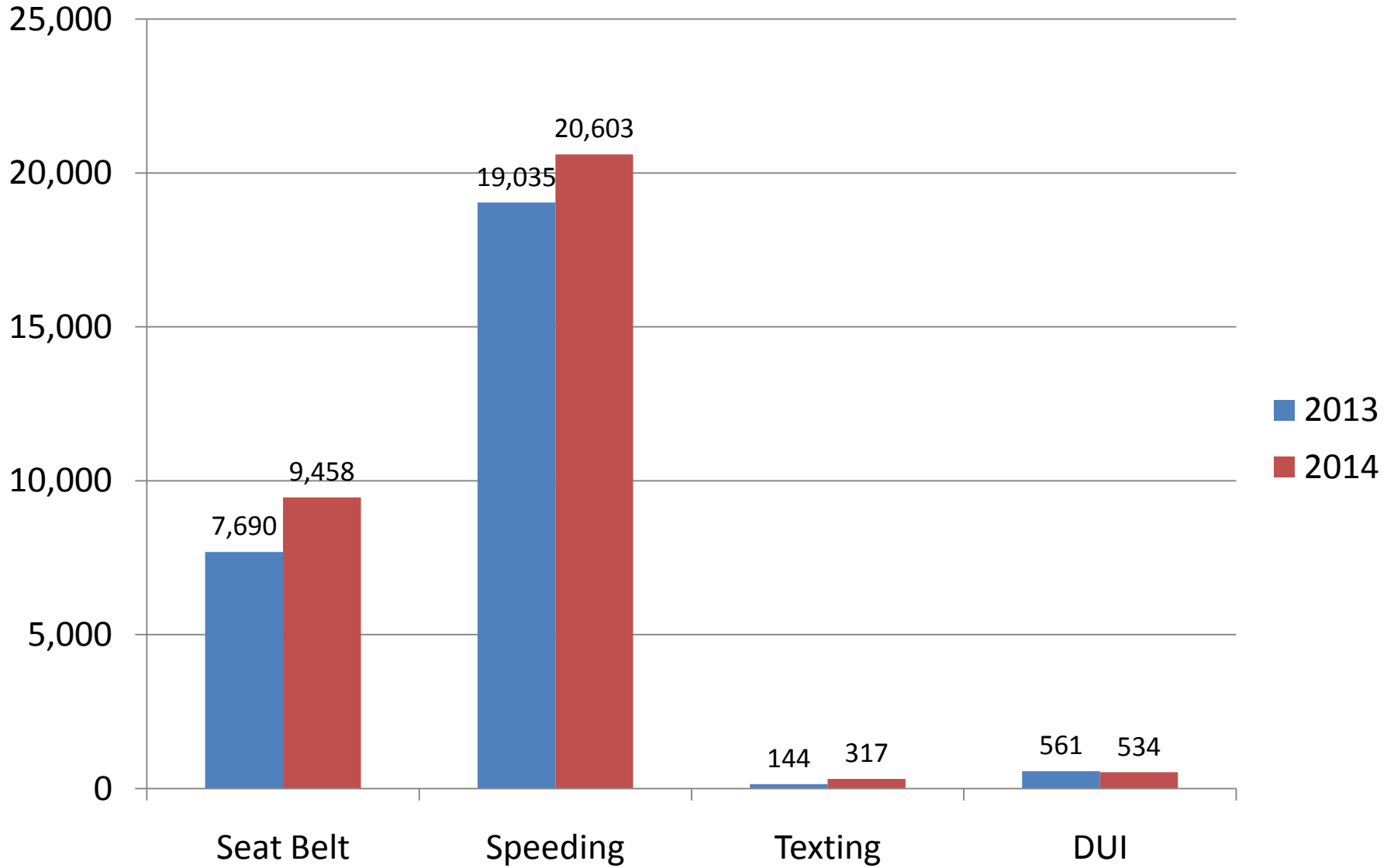
* Source: National Highway Traffic Safety Administration Fatality Analysis Reporting System

Sum of No of Charges Row Labels	Column Labels				
	CY2010	CY2011	CY2012	CY2013	CY2014
Text Mess While Oper MV-1st Of (480)	176	247	260	381	909
Text Mess While Oper MV-2nd Of (481)			2	1	2
Text Mess While Oper MV-3rd Of (482)				2	
Grand Total	176	247	262	384	911



* Source: Rhode Island Judiciary

Motor Vehicle Citations Issued by Rhode Island State Police



* Source: Rhode Island State Police